
Remote Desktop Connection to GSM Network Services

Overview

Terminal Services is a component of Microsoft Windows operating systems that allows a user to access network resources from a remote location. The GSM Computing Services Group maintains a server specifically for this purpose. This document provides instructions on setting up your computer to access the GSM Terminal Services.

Note: Access to the Terminal Server is only possible when connected to the UC Davis Moobilenet wireless network.

Note: These instructions assume that you are using Windows XP. If you have an older version of windows, you may need to install a Remote Desktop Client application. A client for Windows 95, Windows 98 and 98 Second Edition, Windows Me, Windows NT 4.0, or Windows 2000 is available from Microsoft at the following web page:


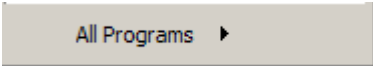

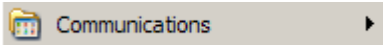
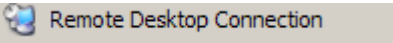
<http://www.microsoft.com/windowsxp/downloads/tools/rdclientdl.msp>

There is also a client for Apple Macintosh computers running OSX. See the following link for download and usage instructions.

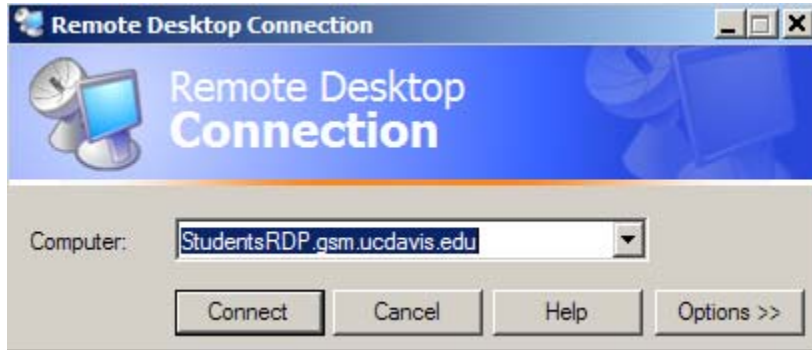
<http://www.microsoft.com/mac/downloads.aspx>

Instructions

To setup your computer to access the GSM Terminal Services on a Windows computer, follow these instructions:

1. Click the Start Menu  on your computer
2. Select "All Programs" 
3. Select "Accessories" 
4. Select "Communications" 
5. Select "Remote Desktop Connection" 

6. Enter *StudentsRDP.gsm.ucdavis.edu* in the computer field, and click the “Connect” button



Note1: The connection name is not case-sensitive.

7. Log onto the remote server, when prompted, using your GSM Login ID (not your Campus Login ID). If you are unfamiliar with your GSM Login ID, please refer to <http://support.gsm.ucdavis.edu/Shares/FAQs/GSMLogin.pdf>
Once logged in, you are ready to use your remote terminal services.



8. When you are finished working, please log-off the terminal server before closing the window.



9. If you encounter the same problem with both addresses, please contact the GSM Computing Services Help Desk, 2-4660, or helpdesk@gsm.ucdavis.edu.